

**GETINGE CLEAN DETERGENT RANGE  
GET MAXIMUM PERFORMANCE**

# GETINGE

GETINGE GROUP



## GETINGE CLEAN – THE ANSWER TO YOUR CLEANING PROBLEMS

What does the word “clean” say to you? That your medical equipment is free from soil, such as blood, fat, pollutants or harmful micro organisms? Good, but are you really sure that even beyond the naked eye, everything you wash, disinfect or sterilize is really clean? Using Getinge Clean guarantees that you don’t have to worry anymore.

Getinge is known around the world for providing the most comprehensive range of cleaning and decontamination products. Our class leading detergent range sets the standard for safety and performance in health-care, pharmaceutical production and life science laboratory applications.

### **For good reasons**

For over 100 years, Getinge has consistently delivered high-performance processing and sterility assurance products that always meet the most demanding industry standards and which can be trusted to consistently give a reliable result. As a complete solution provider and one-stop shop, you can trust Getinge to provide the products you rely on to guarantee cleanliness.

You provide the challenge, we provide the solution.



Getinge’s range of detergents has been developed, tested and validated on Getinge washers to consistently meet EN ISO 15883 standards for cleaning efficiency of goods commonly found in CSSD’s, clinics and practices to protect users and patients.



Getinge  
**Clean**

Enzymatic Detergent

GET MAXIMUM PERFORMANCE



GETINGE  
GETINGE GRO  
**Getinge**  
**Clean**



Universal Detergent

GET MAXIMUM PERFORMANCE 5L



## WHERE CAN I USE GETINGE CLEAN?

Automated washer-disinfectors are programmed to run a number of different cycles depending on goods being processed, quality of water and the type and degree of soiling. Most commonly used cycles include a prewash, main wash and rinsing, finishing with thermal disinfection. Getinge Clean can be optimally used in the prewash and main wash phases with a choice of Getinge Clean detergents and concentrations that are added depending on the cycle selected.

Getinge Clean is a complete and comprehensive range of cleansing detergents, providing efficient and economical throughput along with maximum performance.

In addition, Getinge provides expert consultation services to help you optimize your dosage levels, improve your processes and assist with product selection. Getinge can show you how to enhance patient care, provide a safer staff environment, achieve operational efficiency and guarantee regulatory compliance. We can help you solve your cleaning problems.



THE HEALTHCARE CLEANING AND DECONTAMINATION CYCLE

**STEP 2: Manual Cleaning**

Getinge Clean Enzymatic  
Getinge Clean MIS Detegent  
Getinge Clean Universal

**STEP 1: Pretreatment**

Getinge Clean Pre Treatment Foam

**STEP 3: Sonic Cleaning**

Getinge Clean Enzymatic  
Getinge Clean MIS Detegent  
Getinge Clean Universal

**Step 6: Automated Final Rinse**

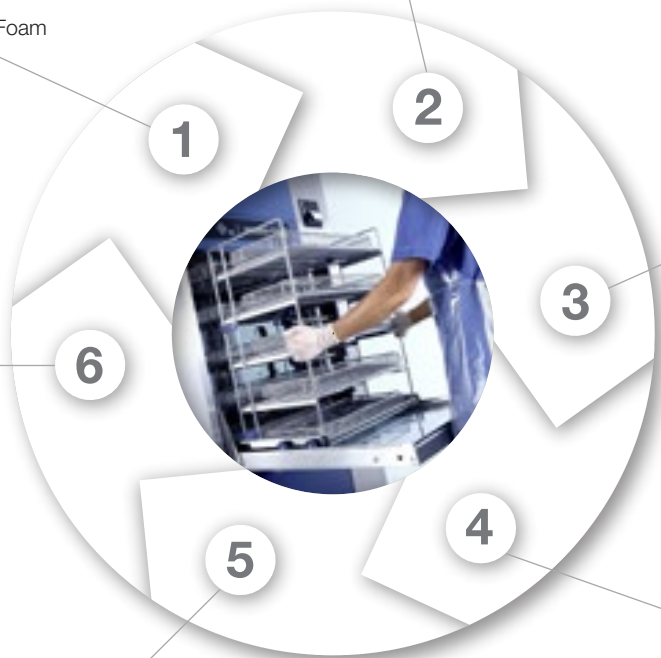
Getinge Clean Lubricant  
Getinge Clean Rinse Aid

**STEP 4: Automated Cleaning**

Getinge Clean Enzymatic  
Getinge Clean MIS Detegent  
Getinge Clean Universal  
Getinge Clean Heavy Soil

**Step 5: Automated Neutralization**

Getinge Clean Neutralizer  
Getinge Clean Neutralizer Plus



## EASY TO USE, EASY TO LEARN

The range of Getinge Clean products are easy to use and the symbols on them make it easy to learn when and where to use them. No more worrying about using the right product at the right time. You can rely on the results.

### Application:



#### INSTRUMENTS

SUITABLE FOR INSTRUMENTS AND ANY OTHER COMPATIBLE MATERIALS



#### ALL GOODS

GENERALLY SUITABLE FOR ALL GOODS



#### ROBOTIC SURGERY INSTRUMENTS

SUITABLE FOR ROBOTIC SURGERY INSTRUMENTS AND OTHER COMPATIBLE MATERIALS

### Product type:



#### PRE TREATMENT FOAM

PRE-TREATMENT FOAM



#### DETERGENT

DETERGENT



#### RINSE AID

RINSE AID



#### NEUTRALIZER

NEUTRALIZER



#### INSTRUMENT LUBRICANT

INSTRUMENT LUBRICANT



When selecting any of the Getinge Clean products it is important to always follow the instrument manufacturer's recommendations and hospital protocols.

### Getinge Clean Pre Treatment Foam

The Getinge Clean Foam Spray is available in 500ml hand held dispensers, ready for use and used principally for spraying stainless steel instruments and other utensils after usage and before being transferred to the CSSD. It is especially recommended when there is a delay between instrument usage and decontamination. Not intended for machine use, Getinge Clean Pre Treatment Foam offers the following features:

- Improves cleaning process effectiveness by increasing contact times with soiled surfaces
- Prevents drying of soiled surfaces before cleaning
- Effective at room temperature
- Will not stain glass, metal, plastic or the equipment



### Getinge Clean Enzymatic Detergent

Getinge Clean Enzymatic detergent is a mild, near-neutral pH cleaner. It combines the power of multi-enzymatic cleaning technology with the advantage of machine spray washing, formulated to remove protein matter from instruments and medical devices. In addition for usage with automated washers, it is suitable for use in sinks and ultrasonic baths. Available in 5L, 10L, 25L and 205L containers, Getinge Clean Enzymatic Detergent offers the following features:

- Penetrates and breaks down protein and organic matter
- pH neutral
- Suitable for all types of washer disinfectors and manual cleaning
- Suitable for all types of materials including flexible endoscopes
- Effective in hard and soft water



## GETINGE CLEAN RANGE IN DETAIL

### Getinge Clean MIS Detergent

Getinge Clean MIS Detergent is a state of the art, low foaming, multiple enzyme formulation, specifically designed to clean complex, minimal invasive instrumentation. Available in 5L containers. Getinge Clean MIS Detergent offers the following features:

- Formulation includes protease, lipase, amylase and cellulase enzymes, surfactants, sequestering agents and corrosion inhibitors.
- Penetrates and breaks down protein and organic matter quickly and efficiently
- Unique ability to breakdown and remove stubborn biofilm
- Specifically tested for soil removal on complex, robotic MIS instrumentation such as the *EndoWrist*® instruments from Intuitive Surgical Inc
- pH neutral and compatible with most instrumentation and reprocessing equipment types (typical pH in use dilution 8)
- Effective in hard and soft water with dosing as low as 0,5 ml per litre depending on water hardness



### Getinge Clean Universal Detergent

Getinge Clean Universal Detergent is a mild alkaline-based cleaner with surfactants. It's a low foaming, non-abrasive, instrument cleaning product that rapidly removes, dissolves and disperses all types of soil as well as water scale and oxide stains. Available in 5L, 10L, 25L and 205L containers, Getinge Clean Universal Detergent offers the following features:

- Excellent cleaning performance
- Recommended when a department wants to reduce the number of detergents
- Suitable for all types of washer-disinfectors.
- Suitable for most types of materials. Material compatibility has to be checked with the manufacturer.
- Neutralization is not required





### Getinge Clean Heavy Soil Detergent

Getinge Clean Heavy Soil Detergent is a stronger alkaline-based cleaner, suitable for alkaline-resistant materials such as stainless steel instruments and glass. Not suitable for aluminium and anodized aluminium. Available in 5L, 10L, 25L and 205L containers, Getinge Clean Heavy Soil Detergent offers the following features:

- For heavily soiled dried items such as gynecological and orthopedic instruments
- Effective for removing blood, fat, grease and oil
- Effective on strongly binding contaminants including burnt electro-surgical deposits
- Suitable for all types of washer-disinfectors
- Hinders protein redeposition
- Neutralization required with Getinge Clean Neutralizer.



### Getinge Clean Neutralizer

Getinge Clean Neutralizer is used to neutralize alkaline residues following the main wash phase. Neutralizer can also be used to remove hard water stain in washer-disinfector chambers. Available in 5L, 10L, 25L and 205L containers, Getinge Clean Neutralizer offers the following features:

- Mildly acidic, based on a citric acid
- Phosphate and surfactant free
- Suitable for all types of washer disinfectors
- Can be used on a wide range of materials



## GETINGE CLEAN RANGE IN DETAIL

### Getinge Clean Neutralizer Plus

Getinge Clean Neutralizer Plus is a powerful, multipurpose acid neutralizer and cleaner. Available in 5L, 10L, 25L and 205L containers, Getinge Clean Neutralizer Plus offers the following features:

- Formulation includes a blend of orthophosphoric & nitric acid – (typical pH in use dilution 2)
- Process additive for pH neutralization of high alkaline detergents
- Removes rust, stains and hard water scale from stainless steel instruments, equipment and washer disinfecter chambers
- Restores stainless steel surface finish
- Only recommended for use on stainless steel and glass



### Getinge Clean Rinse Aid

Getinge Clean Rinse Aid is an anti-scaling, surfactant-based, rinse additive used in the final rinse to help drying. Available in 5L, 10L, 25L and 205L containers, Getinge Clean Rinse Aid offers the following features:

- Speeds up drying times
- Reduces water spotting for a non-streaky finish
- Helps combat scaling
- Compatible with most materials
- Bio-compatible




### Getinge Clean Instrument Lubricant

Getinge Clean Instrument Lubricant is added in the final rinse phase for instrument lubrication. Its low dosage emulsion formulation ensures deposition of a thin film of lubricant. Available in 5L, 10L and 25L containers, Getinge Clean Instrument Lubricant offers the following features:

- Ensures lubrication of hinges, pins and joints
- When used regularly, extends instrument life and reduces service and repair costs
- Does not harden during sterilization
- Bio-compatible
- Does not inhibit the sterilization process



GETINGE AUTOMATED WASHER DETERGENT RANGE	MATERIAL COMPATIBILITY										SIZE & PACKAGING				
	Aluminium	Anodised aluminium	Titanium	Non ferrous metals	Matt chrome plated	Stainless steel	Glass	Ceramic	Rubber	Plastic	500ml	5 liter	10liter	25 liter	205 liter
 GETINGE CLEAN PRE TREATMENT FOAM	•	•	•	•	•	•	•	•	•	•	20x0.5L				
GETINGE CLEAN ENZYMATIC DETERGENT	•	•	•	•	•	•	•	•	•	M		✓	✓	✓	✓
GETINGE CLEAN MIS DETERGENT	•	•	•	•	•	•	•	•	•	•		✓			
GETINGE CLEAN UNIVERSAL DETERGENT	M	M	M	M	•	•	•	•	•	M		✓	✓	✓	✓
GETINGE CLEAN HEAVY SOIL DETERGENT			M		•	•	•	•	•	M		✓	✓	✓	✓
GETINGE CLEAN NEUTRALIZER	M	M	•	•	•	•	•	•	M	M		✓	✓	✓	✓
GETINGE CLEAN NEUTRALIZER PLUS			M	M	M	•	•	M	M	M		✓	✓	✓	✓
GETINGE CLEAN RINSE AID	•	•	•	•	•	•	•	•	M	M		✓	✓	✓	✓
GETINGE CLEAN INSTRUMENT LUBRICANT	•	•	•	•	•	•						✓	✓	✓	

• = Compatible M = Always refer to instrument manufacturer's guidance

This chart is only a guideline and information on the reprocessing of medical devices from the manufacturer according to EN ISO 17664 must always be followed

## WE GIVE YOU THE WHOLE PICTURE

### Water quality knowledge

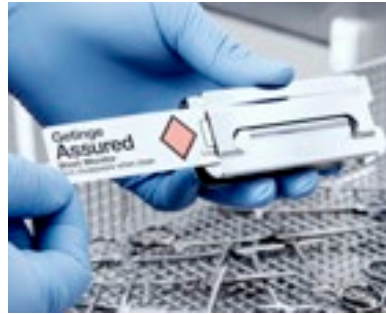
To obtain the maximum performance from your Getinge Clean products and minimize dosing levels, it is crucial that optimal water quality is achieved in terms of its physical, chemical and biological characteristics. Getinge can provide on the spot testing of key parameters to full laboratory analysis services. Based on information from these tests, Getinge can recommend any steps to be taken that ensure you achieve the best results possible from your washer-disinfector and cleansing agents, increasing throughput whilst minimizing utility costs, and also leaving a cleaner footprint.

### Accessories

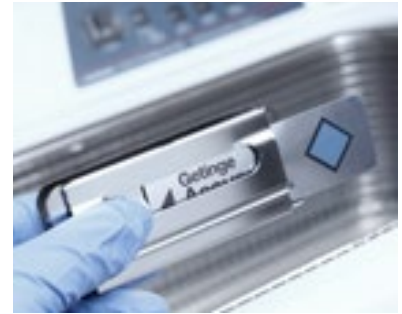
You work in a busy department and need to efficiently handle and dispense your chemistries. Getinge has a range of ergonomically designed accessories to enable you to efficiently use Getinge Clean products.



TEST SOIL



WASH MONITOR WITH HOLDER



WASH MONITOR ULTRASONIC WITH HOLDER



LUMEN MONITOR (RIGID)



LUMEN MONITOR (FLEX)



PROTEIN TEST



WATER TEST KIT



CANISTER PUMP



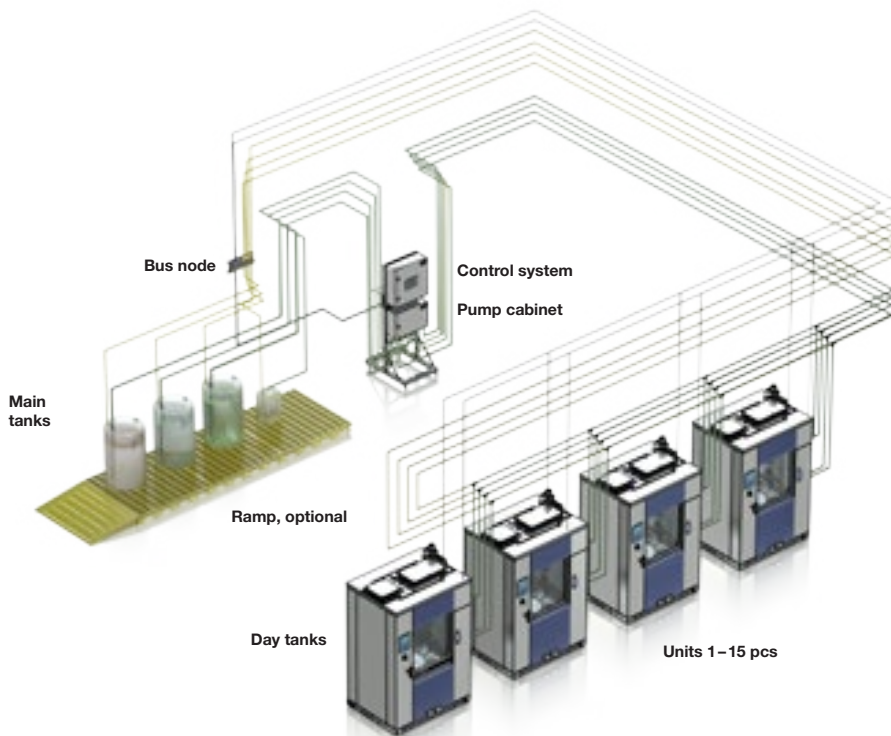
CONTAINER KEY

We also offer other detergent accessories/water test, for more information visit [getinge.com](http://getinge.com)

## GETINGE CMS DOES THE THINKING FOR YOU

Getinge Clean Management System (CMS) keeps washer-disinfectors and the day tanks of other connected equipment topped up at optimal levels. Hygienic, sealed day tanks are used as a buffer between the detergent containers and the connected equipment. Each day tank is also equipped with three level sensors to maintain the right detergent level so your staff doesn't have to worry about having to check detergent levels or tanks running dry. The washer-disinfectors utilize their standard dosing system with suction wands, detergent pumps and flow meters. This simplifies implementation since the validation process in the washer-disinfector is not affected.

### OVERVIEW OF GETINGE CLEAN MANAGEMENT SYSTEM



User-friendly HMI color touch panel for easy operator interface.



Getinge Online for remotely checking system parameters and monitoring, e.g. notifications which sends an email and/or text (SMS) message to the customer's mobile phone or PC when Getinge CMS reaches ordering level or gives a warning alarm before levels reach a critical point.



## GETINGE CLEAN SINK DOSING



Getinge Clean Sink Dosing (CSD) is a multi-purpose, easy-to-operate detergent dosing system for better process control of manual sink-cleaning applications. It delivers Getinge Clean detergents into a pre-cleaning sink for soaking and manual cleaning of various items.

The Getinge CSD unit is easy to install and, subject to local regulations, is typically mounted on the wall behind the sink. The unit can also be used to dispense detergent to ultrasonic baths and automatically refilled via Getinge's central dosage system – Getinge Clean Management System (CMS).



## GET A CLEAN CONSCIENCE

### **A total green concept**

Getinge Clean is not only about cleaning instruments, it is also about having total control in how we affect our environment. All of our detergents are biodegradable and our packaging is recyclable.

### **Main focus: energy efficiency**

At Getinge, we are committed to contribute to a sustainable society. We work purposefully to optimize our use of energy and natural resources, minimize our emissions to air and reduce the environmental impact of our waste management.

Our overriding environmental objective is optimizing energy consumption and thus reducing the impact on the climate.





Getinge Infection Control is the world leading provider of solutions for sterile processing in the healthcare sector. We aim to ensure the highest quality and safety at the lowest total cost. We offer complete solutions for a seamless work-flow, reducing the risk of contamination while helping healthcare to increase efficiency.

**Getinge Infection Control AB**

P O Box 69  
SE-305 05 Getinge  
SWEDEN  
Phone: +46 (0) 10 335 00 00  
E-mail: info@getinge.com

**GETINGE**  
GETINGE GROUP

[getinge.com](http://getinge.com)

GETINGE GROUP is a leading global provider of products and systems that contribute to quality enhancement and cost efficiency within healthcare and life sciences. We operate under the three brands of ArjoHuntleigh, GETINGE and MAQUET. **ArjoHuntleigh** focuses on patient mobility and wound management solutions. **GETINGE** provides solutions for infection control within healthcare and contamination prevention within life sciences. **MAQUET** specializes in solutions, therapies and products for surgical interventions, interventional cardiology and intensive care.