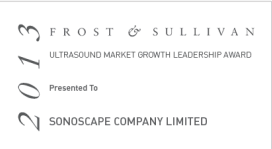


E1Vet

Company Milestone

- 2002: Company Founded in Shenzhen, China
- 2008: Received “European Entrepreneurial Company 2008” award from FROST & SULLIVAN
- 2009: Received “Product Quality Leadership Award 2009” from FROST & SULLIVAN
- 2011: Received the Reddot 2011 Product Design Award for S20 in Essen, Germany
- 2013: Received “Ultrasound Market Growth Leadership Award, 2013” from FROST & SULLIVAN
- 2014: Received the iF product design award 2014 for S9 in Munich, Germany
- 2014: Received “Company of the Year in Ultrasound Market, 2014” from FROST & SULLIVAN
- 2016: Received “Product innovation in Electronic Endoscopy Market” from FROST & SULLIVAN
- 2017: Received the iF product design award 2017 for X5 in Munich, Germany
- 2017: Listed on the Shenzhen Stock Exchange in April



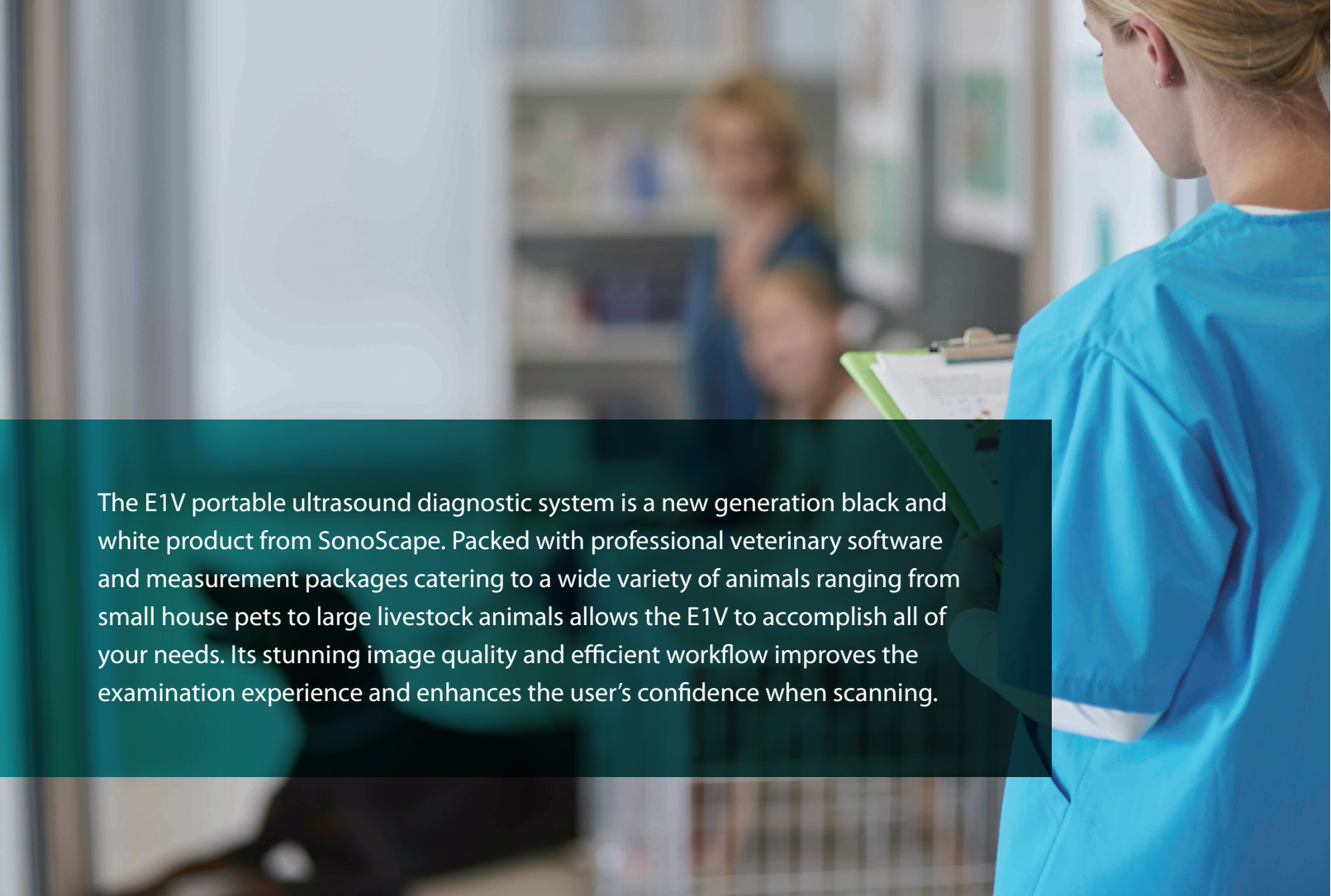
ISO 13485

CE 0197



SonoScape Medical Corp.
Yizhe Building, Yuquan Road, Shenzhen, 518051, China
Tel: 86-755-26722890 Fax: 86-755-26722850
E-mail: market@sonoscape.net www.sonoscape.net

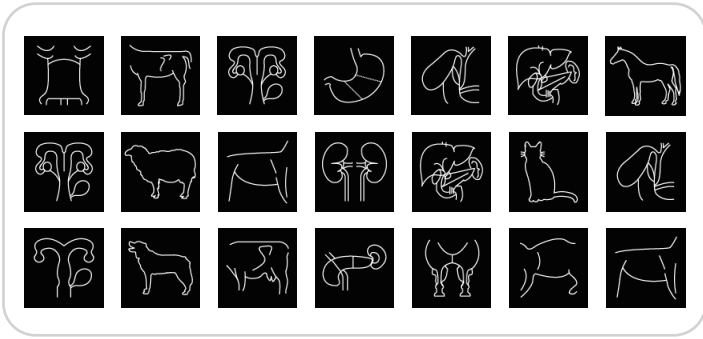
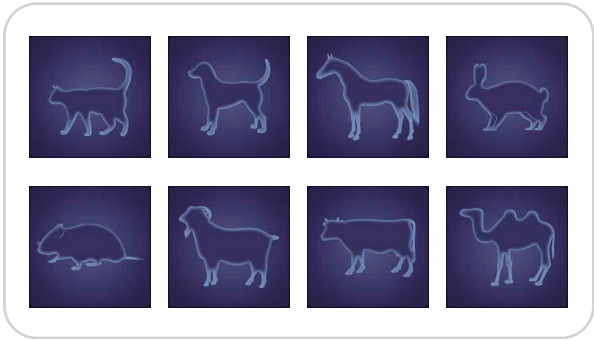




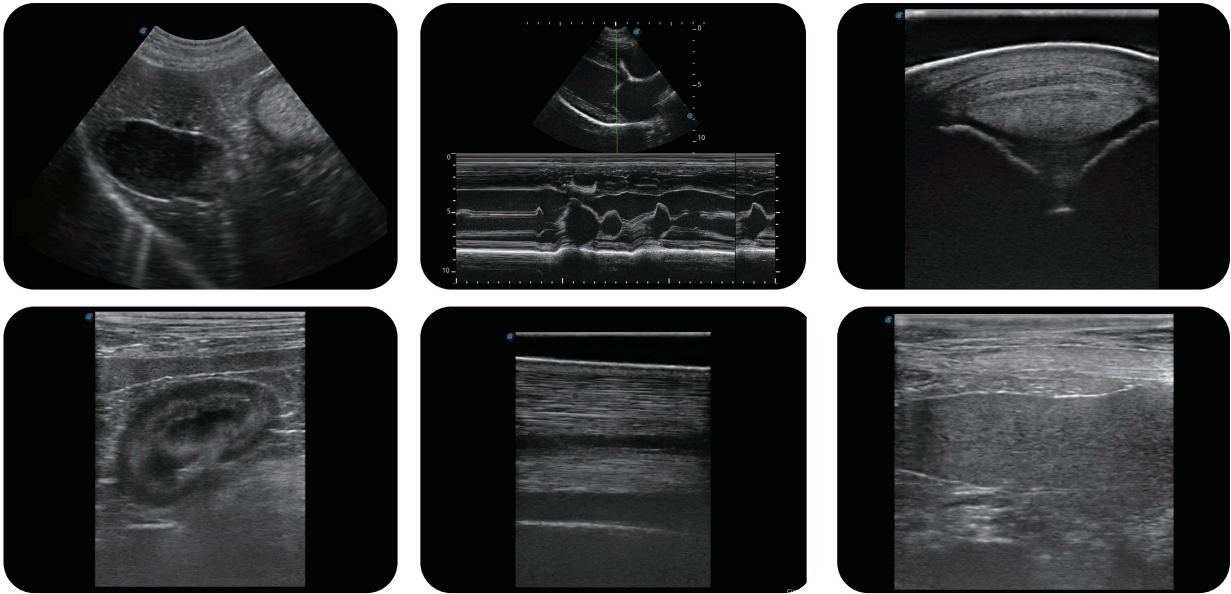
The E1V portable ultrasound diagnostic system is a new generation black and white product from SonoScape. Packed with professional veterinary software and measurement packages catering to a wide variety of animals ranging from small house pets to large livestock animals allows the E1V to accomplish all of your needs. Its stunning image quality and efficient workflow improves the examination experience and enhances the user's confidence when scanning.

Incorporating veterinary applications found in high end ultrasound machines, the E1V is able to cover many diagnostic imaging needs in one system with high-quality detailed image.

- Professional veterinary measurements and calculations
- Full library of body marks and annotations
- Veterinary information management and reporting
- User-definable graphic exam modes are applicable for different types of animals
- Variety of accessories to fit your needs in any situations



Capable B/W Ultrasound for Animal Care



Excellent Image Quality

- Dynamic multi-beam imaging
- Spatial compound imaging
- Pure inversion harmonic imaging
- Tissue specific imaging
- Wide-scan Imaging for linear transducers
- PW with Auto Trace

User Friendly Designs

- 15.6 inch high definition LED monitor
- Noiseless system
- Quick boot up
- Auto brightness for screen and control panel
- Water resistant keyboard cover